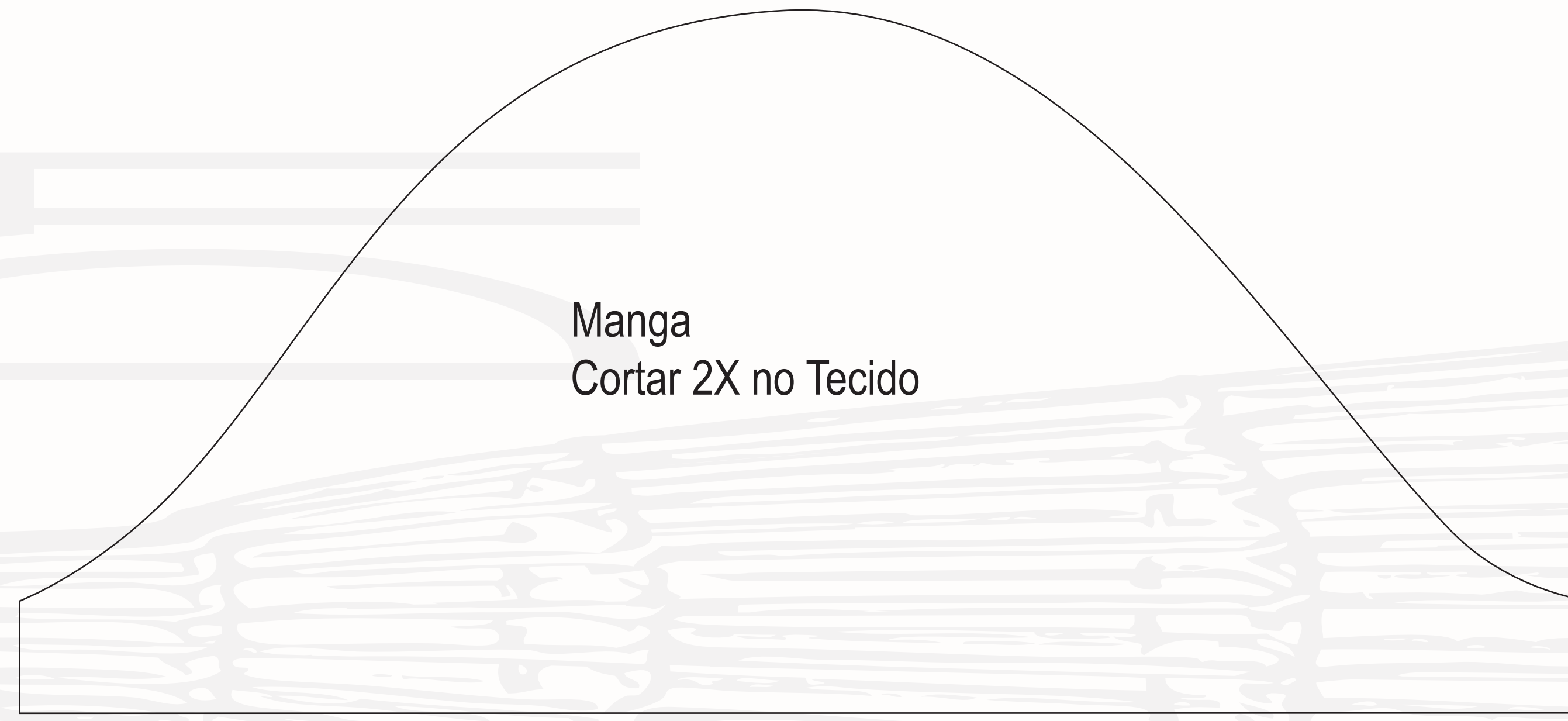


**Projeto95**  
**Molde Blusa Peplum**  
**Tamanho 38**

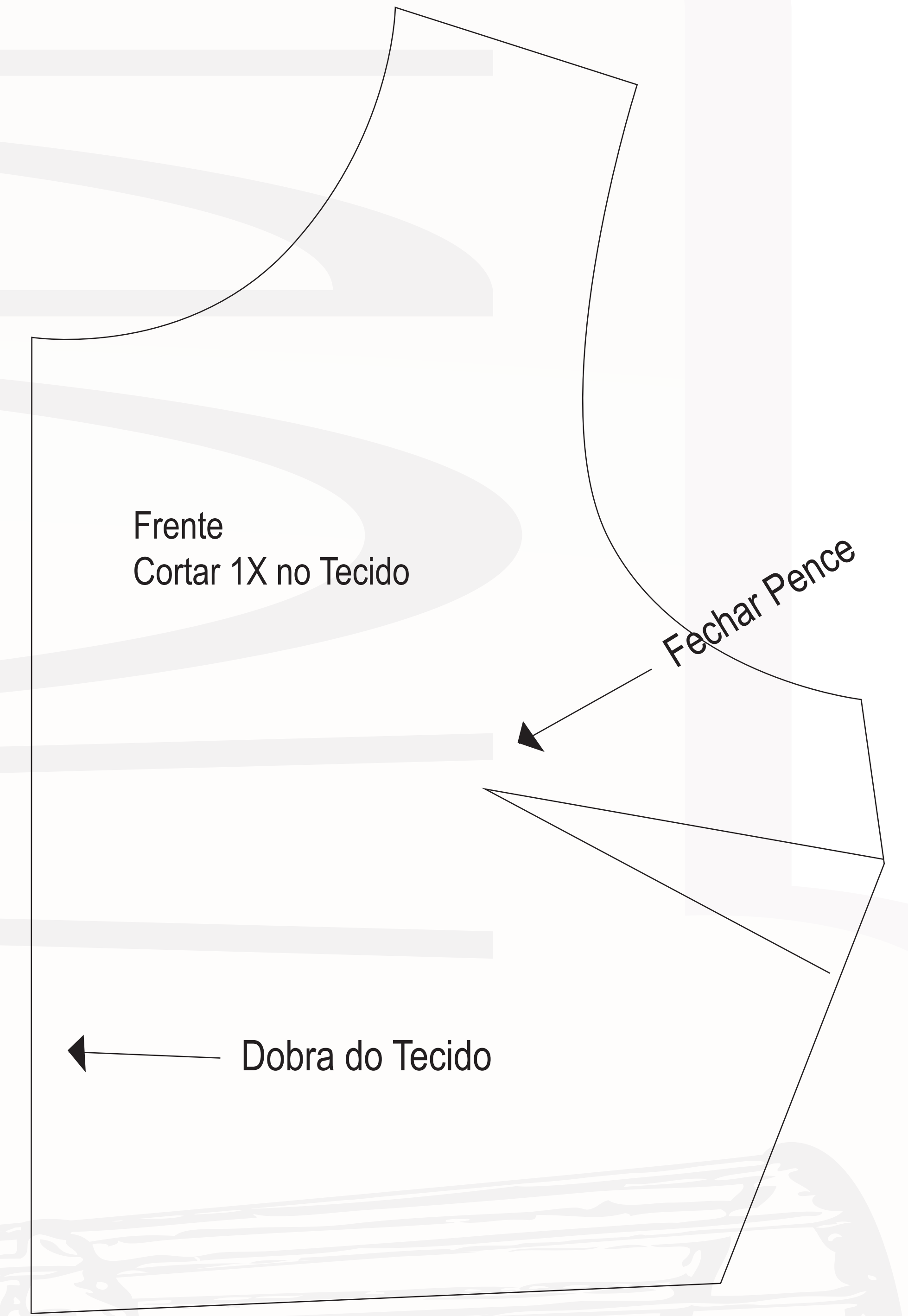


Costas  
Cortar 2X no Tecido

← Zíper



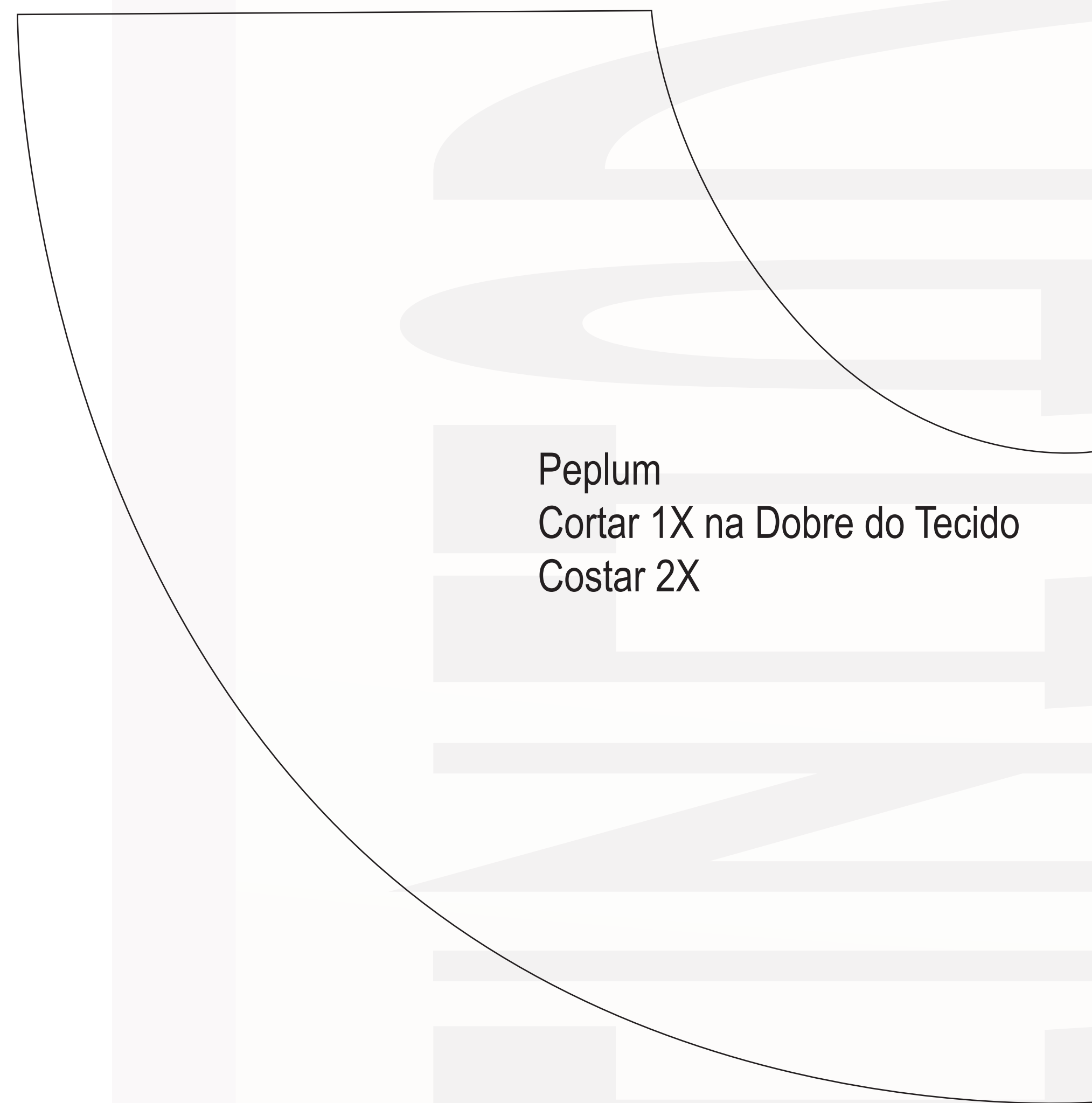
Manga  
Cortar 2X no Tecido



Frente  
Cortar 1X no Tecido

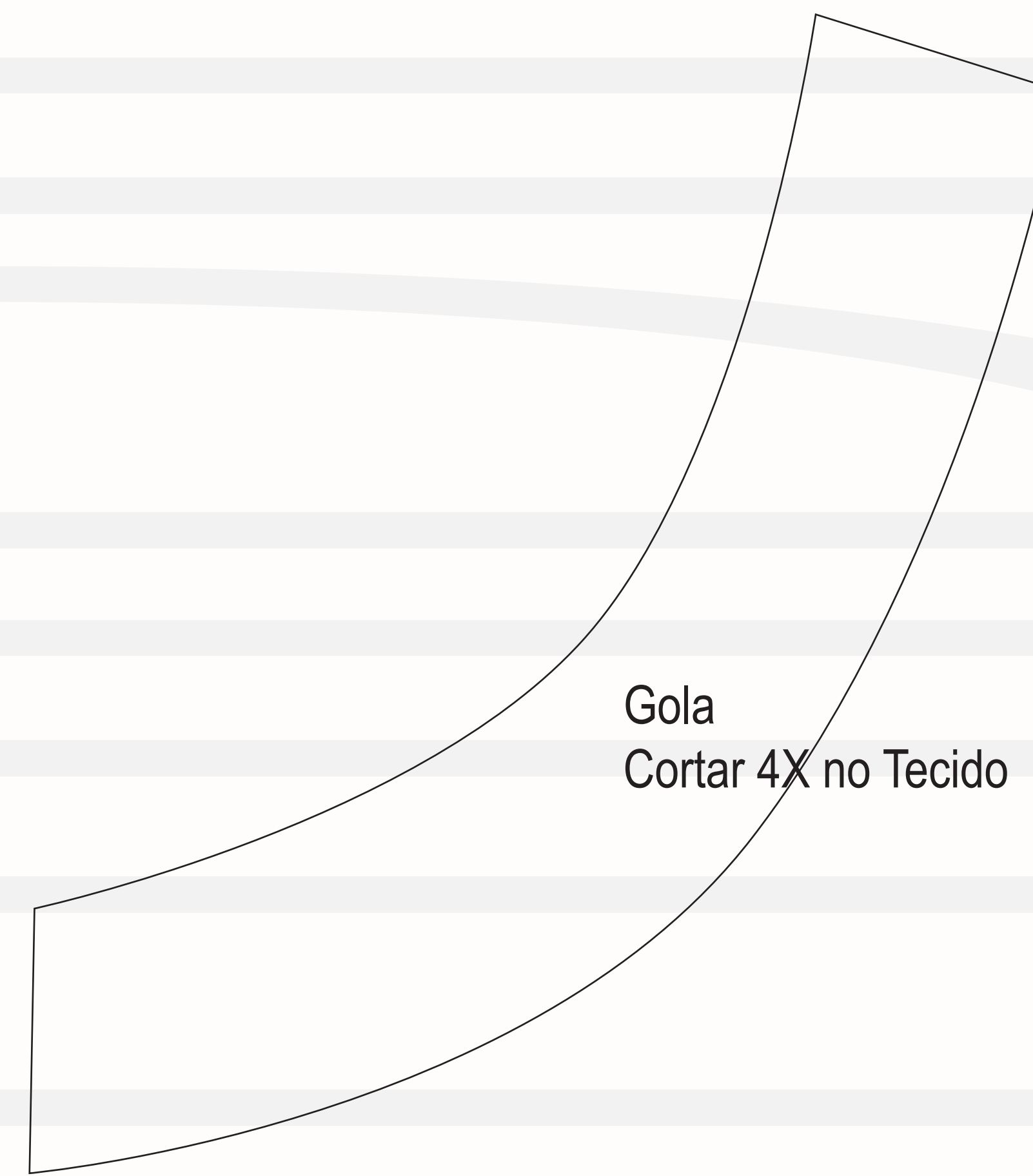
Fechar Pence

← Dobra do Tecido



Peplum  
Cortar 1X na Dobre do Tecido  
Costar 2X

← Dobra do Tecido



Gola  
Cortar 4X no Tecido