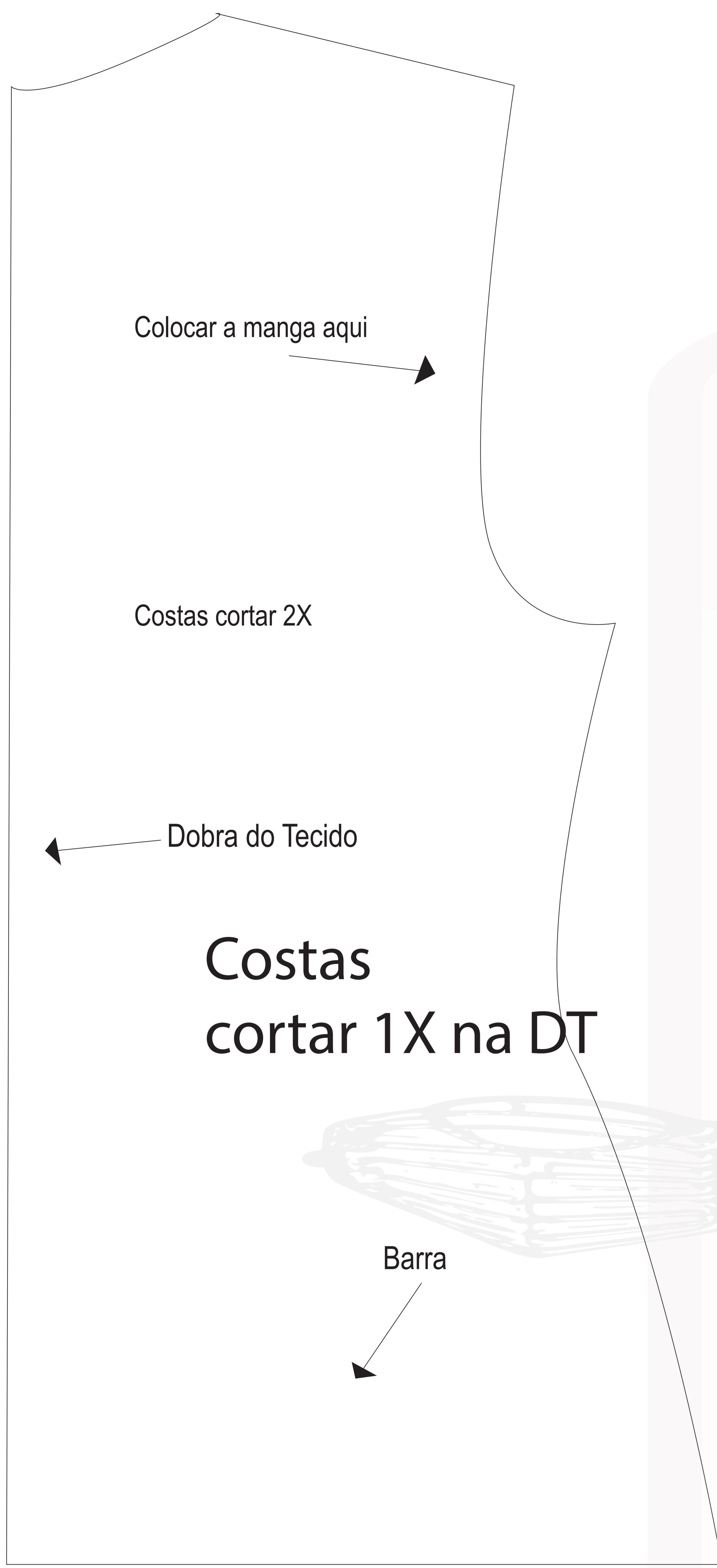


**Blusa Suede  
Tamanho 52**



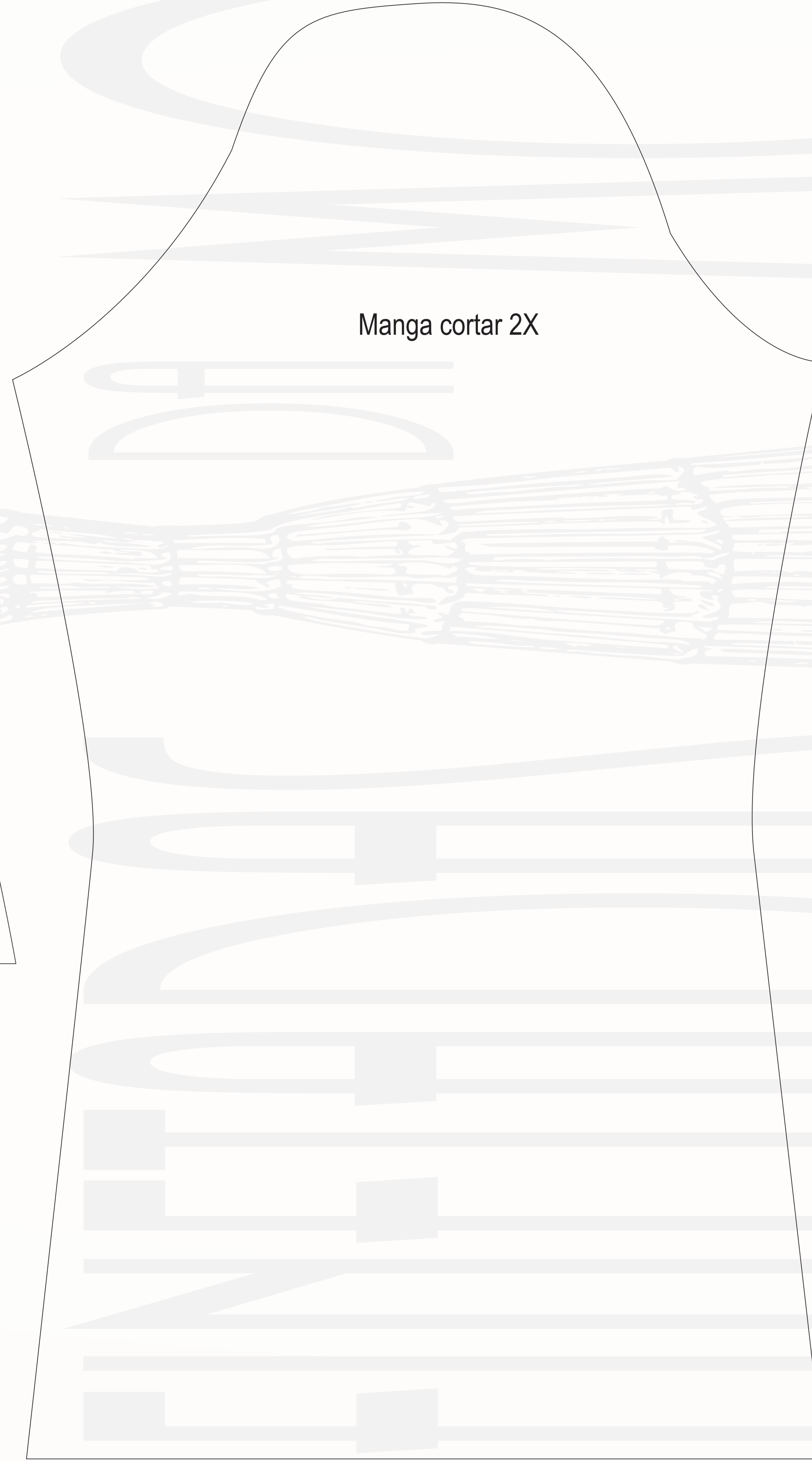
Colocar a manga aqui

Costas cortar 2X

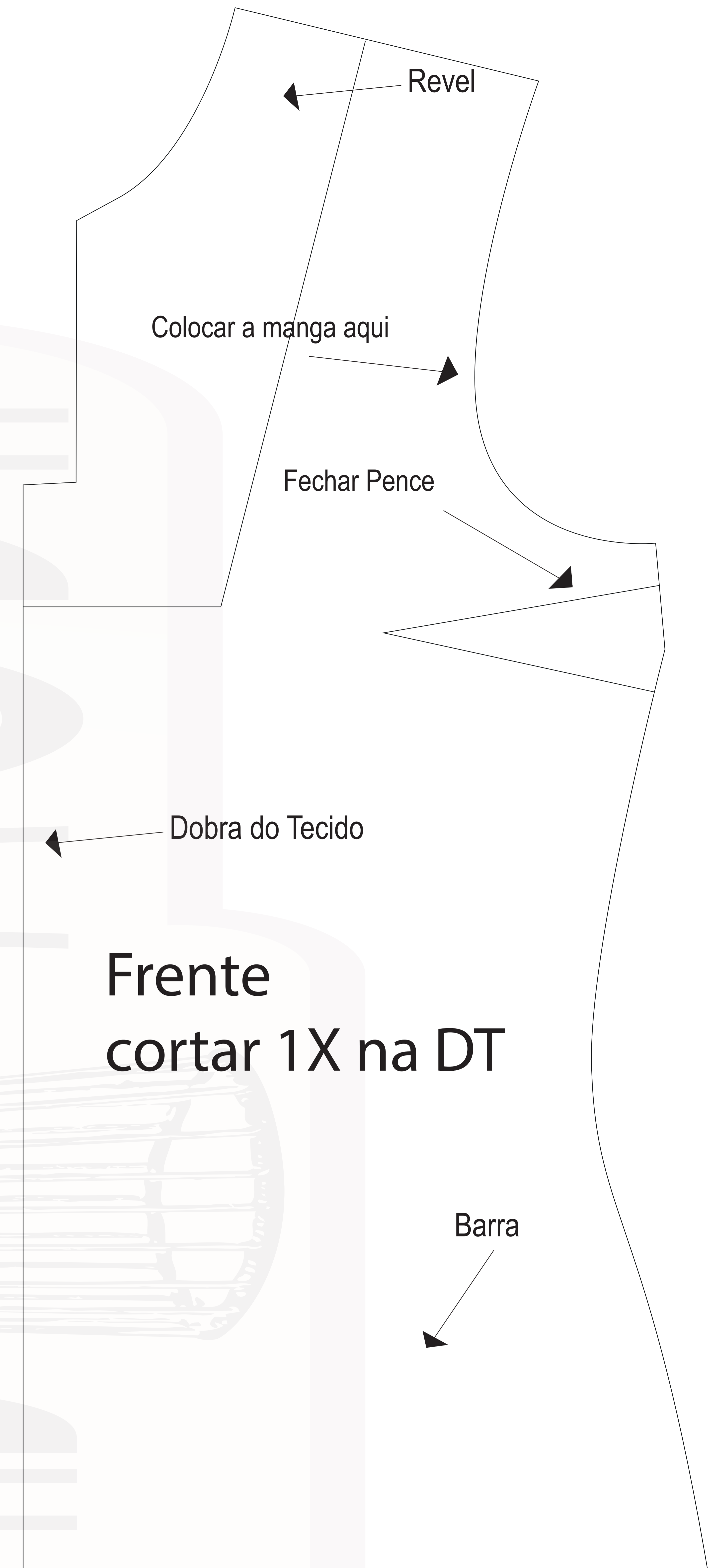
Dobra do Tecido

Costas  
cortar 1X na DT

Barra



Manga cortar 2X



Revel

Colocar a manga aqui

Fechar Pence

Dobra do Tecido

Frente  
cortar 1X na DT

Barra