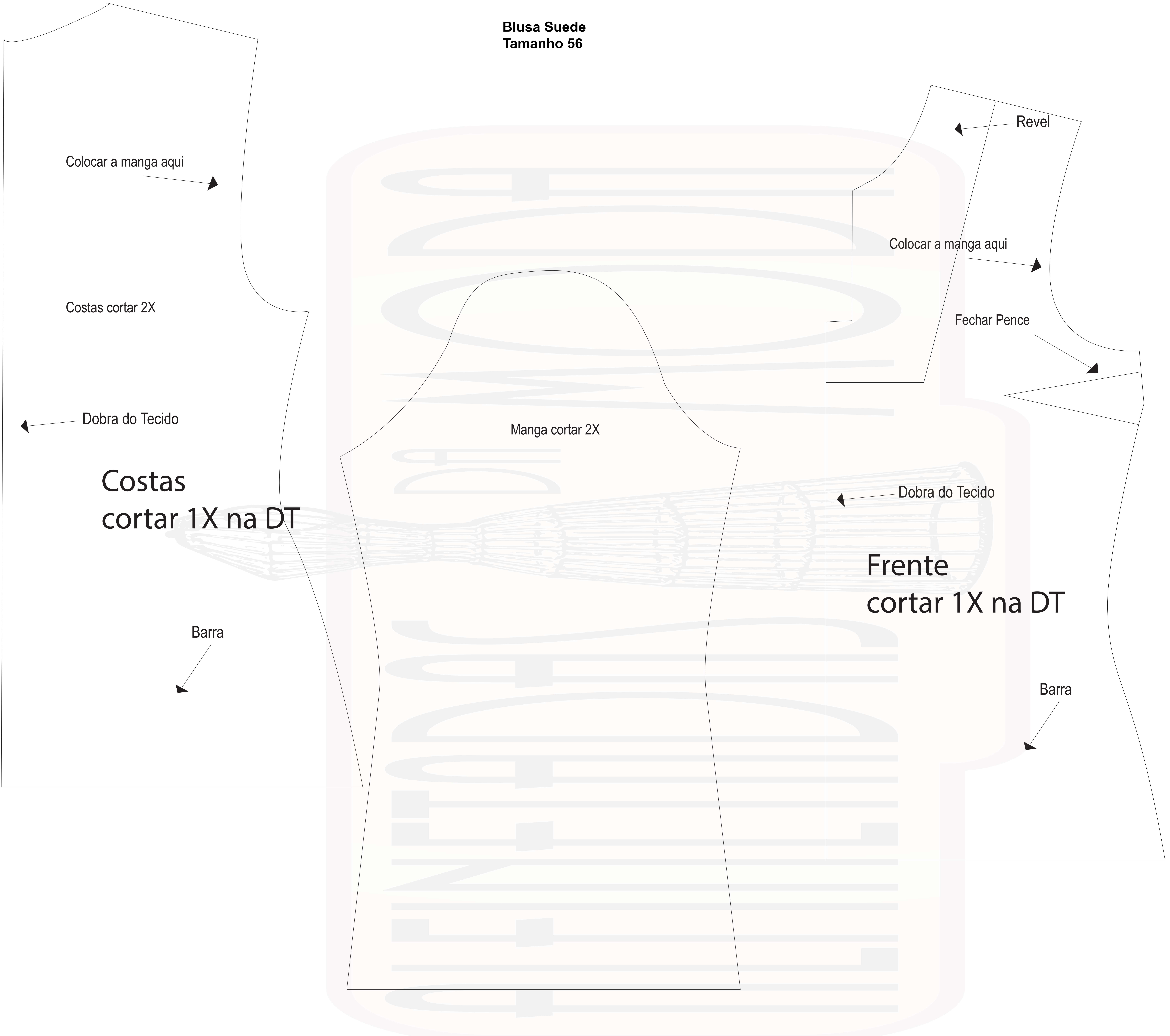


**Blusa Suede
Tamanho 56**



Colocar a manga aqui

Costas cortar 2X

Dobra do Tecido

**Costas
cortar 1X na DT**

Barra

Manga cortar 2X

Colocar a manga aqui

Fechar Pence

Revel

Dobra do Tecido

**Frente
cortar 1X na DT**

Barra